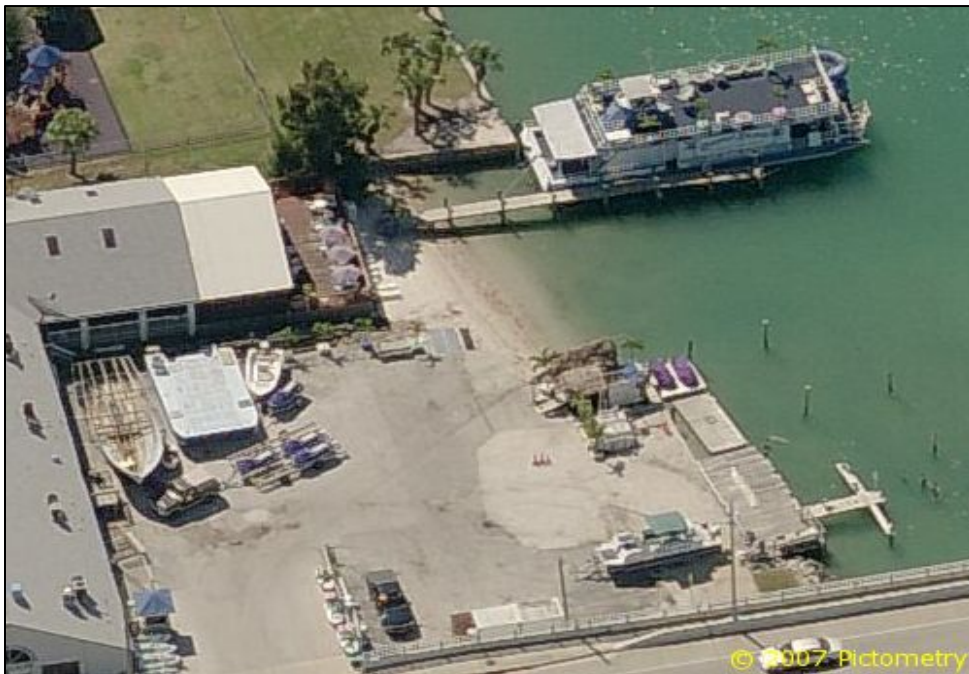


Featured Property

Brief Description: Waterfront commercial parcel on Treasure Island where the causeway crosses from St. Pete Beach to Treasure Island.

Address: 9540 Blind Pass Road, St. Pete Beach Florida

Sale Price: \$950,000 Negotiable



Property Attributes

- Waterfront Maritime location.
- 16,000 SF (approximate) of land.
- Excellent access on Blind Pass Road. Located where the bridge connects St. Pete Beach and Treasure Island.
- Commercial General Zoning in St. Pete Beach
- Marine operations license and retail license available.
- 170 Ft on the water (approximate)
- Submerged land leases available
- Existing docks
- Watersports business for sale also.

Directions to Property

From downtown St. Petersburg, take Central Avenue to Gulf Blvd (Central dead ends into Gulf at a light). Turn left on Gulf and follow it South. Gulf will curve left (by the 7-11) going over a bridge turning into Blind Pass Road. The property is located on the right hand side just after you cross the bridge (first entrance).



Information has been secured from sources we believe reliable, but we make no representations or warranties, expressed or implied, as to its accuracy. All references to age, square feet and expenses or use are approximate. Buyers should conduct their own investigations and rely on those results.

Buddy Sauter & Associates - Property Overview - 727-421-3706

Address: 9540 Blind Pass Road

Location: St. Pete Beach, Pinellas County

Land Area: .5053 Acres (Approximate, from tax records)

Zoning: Commercial General in St. Pete Beach

Building Heated Square Feet: N/A

Building Total Square Feet: N/A

Flood Zone: Absolutely, its waterfront.

Improvements:

Legal Description: Pt Of Sw 1/4 Desc From Sw Cor Of Lot 5, Blk 114, St Petersburg Beach North Unit No. 10 Th S82dw 350ft For Pob Th S82dw 28ft(S) To Mhw Th N'ly Alg Mhw 185 Ft(S) To S R/W Of Blind Pass Rd Th N82de 87.01ft Th N76de 53.19ft Th S08de 120.29ft Th S82dw 75ft Th S08de 60ft To Pob

Present Use: Marine watersports business

Taxes: \$9,230 in 2008

Parcel Id: 25-31-15-00000-310-0200

Mortgage Holder: Private party

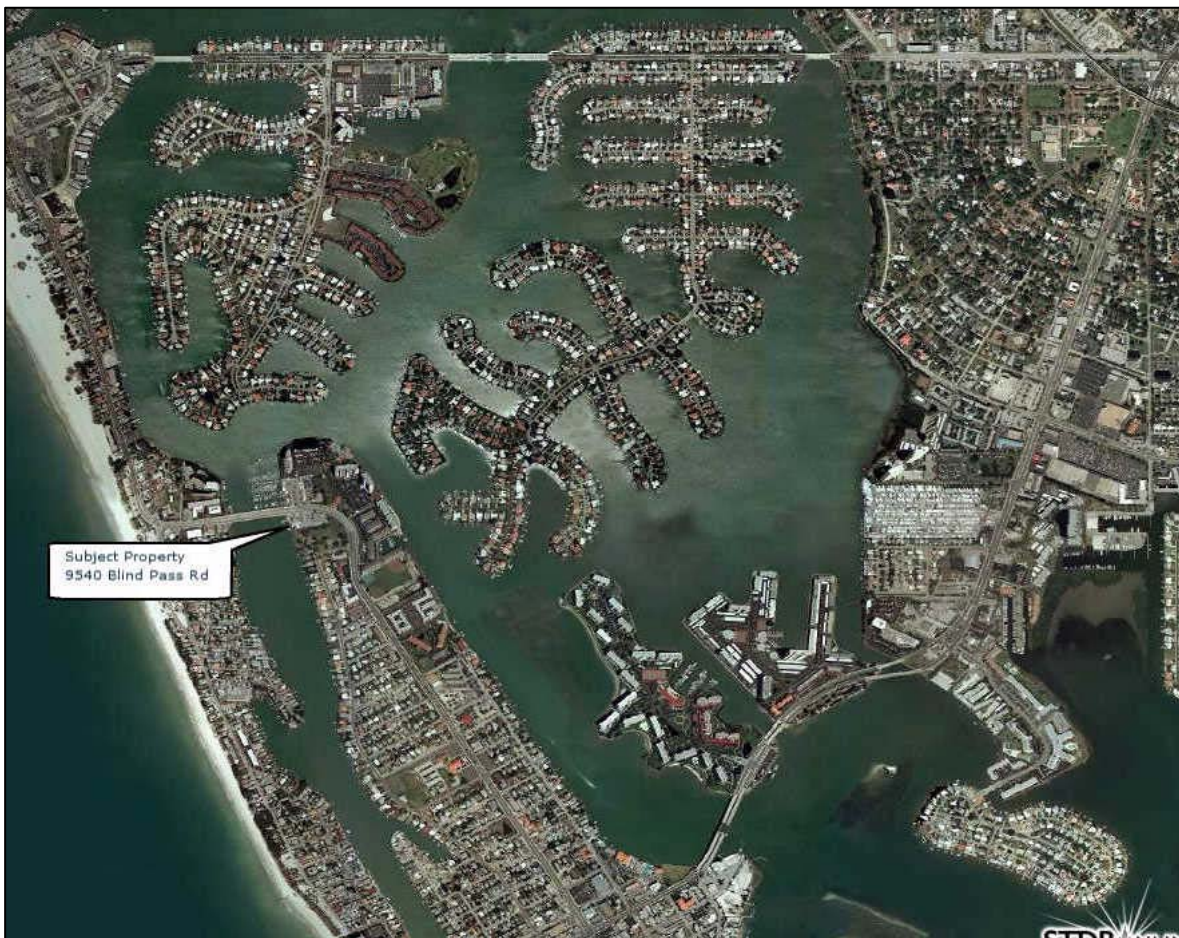
Traffic Count: 18,000 cars per day

Sale Price: \$950,000 Negotiable

Lease Rate: N/A

Terms: Cash or Conventional

Please contact listing agent for showing by calling 727 421 3706.



Information has been secured from sources we believe reliable, but we make no representations or warranties, expressed or implied, as to its accuracy. All references to age, square feet and expenses or use are approximate. Buyers should conduct their own investigations and rely on those results.


KELLER WILLIAMS
GULF COAST REALTY